








# BMJ Open Development of a framework on the incorporation of real-world evidence (RWE) into cancer drug funding decisions in Canada: the Canadian Real-world Evidence for Value of Cancer Drugs (CanREValue) collaboration

Kelvin Kar-Wing Chan <sup>1,2,3</sup> Pam Takhar <sup>2,4</sup> William K Evans,<sup>5</sup>  
Rebecca E Mercer <sup>2,3</sup> Avram Denburg <sup>6,7</sup> Jaclyn Beca,<sup>8</sup> Caroline Muñoz,<sup>2,4</sup>  
Scott Gavura,<sup>4</sup> Winson Y Cheung,<sup>2,9,10</sup> Jeffrey Hoch,<sup>6,11</sup> Erica Craig,<sup>12</sup>  
Claire de Oliveira <sup>2,6,13</sup> Marc Geirnaert,<sup>14</sup> Maureen Trudeau,<sup>3</sup> Tarry Ahuja,<sup>15</sup>  
Stuart Peacock,<sup>2,16</sup> Wei Fang Dai,<sup>1,2</sup> Wanrudee Isaranuwatthai <sup>6,17</sup>  
Yvonne Bombard <sup>6,18</sup> Carole Chambers,<sup>19</sup> Craig C Earle,<sup>1,3</sup> Riaz Alvi,<sup>20</sup>  
Petros Pechlivanoglou,<sup>21</sup> Mina Tadrous<sup>22,23</sup>

# CanREValue

- The Canadian Real-World Evidence for Value in Cancer (CanREValue) Collaboration established due to growing interest in using real world evidence (RWE) to support health technology assessment.
- CanREValue developed a framework to generate the use of RWE to inform cancer funding decisions.

# CanREValue framework

- The goal of the framework was to facilitate the use of RWE by Canadian decision-makers for:
  - i) The reassessment of cancer drugs
  - ii) The refinement of funding decisions and the negotiation of drug prices.

# Working Groups

5 working groups formed:

- 1) RWE Planning and Drug Selection working group
- 2) RWE Data working group
- 3) RWE methods working group
- 4) RWE reassessment and update working group
- 5) Engagement working group

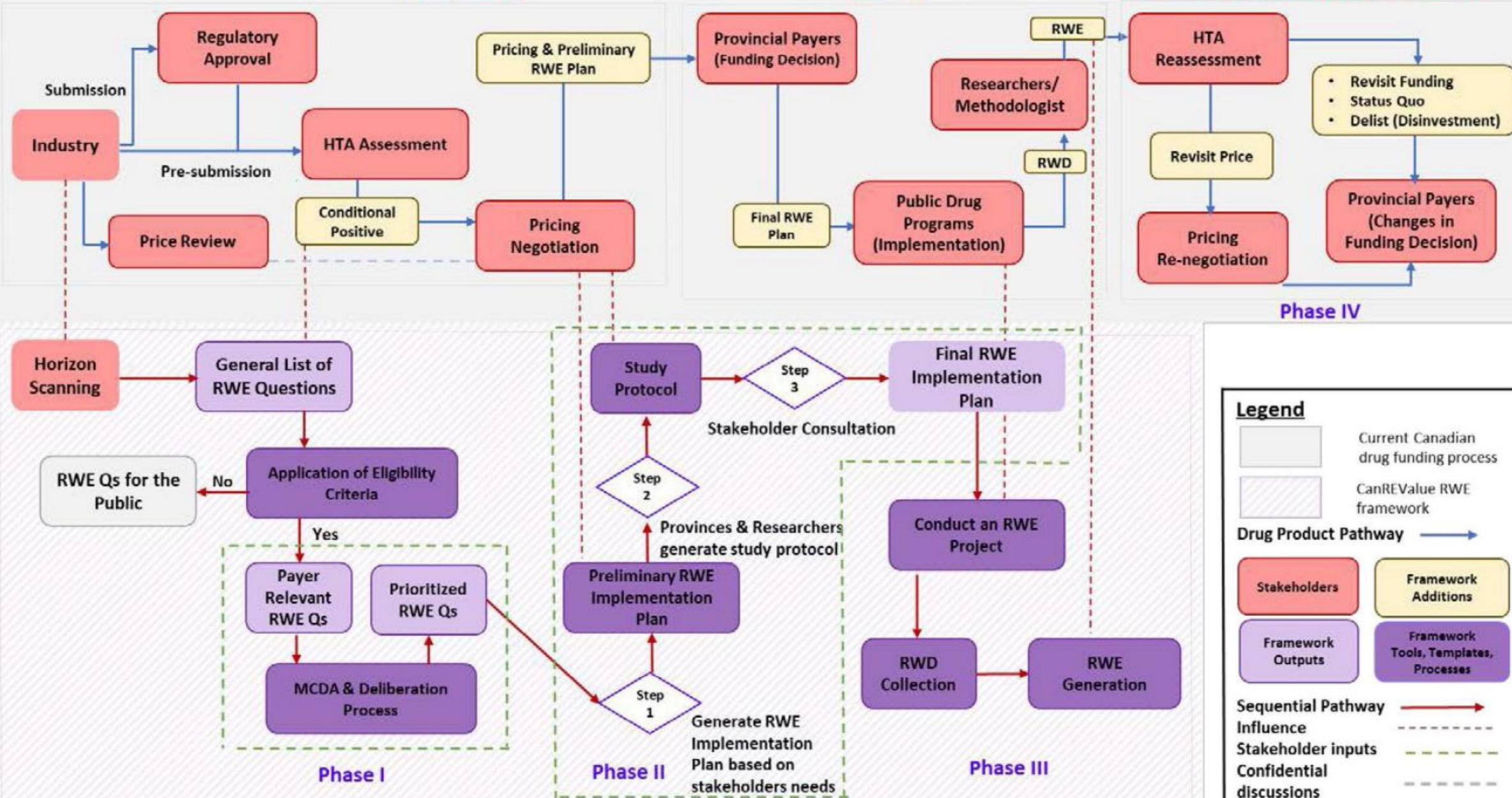


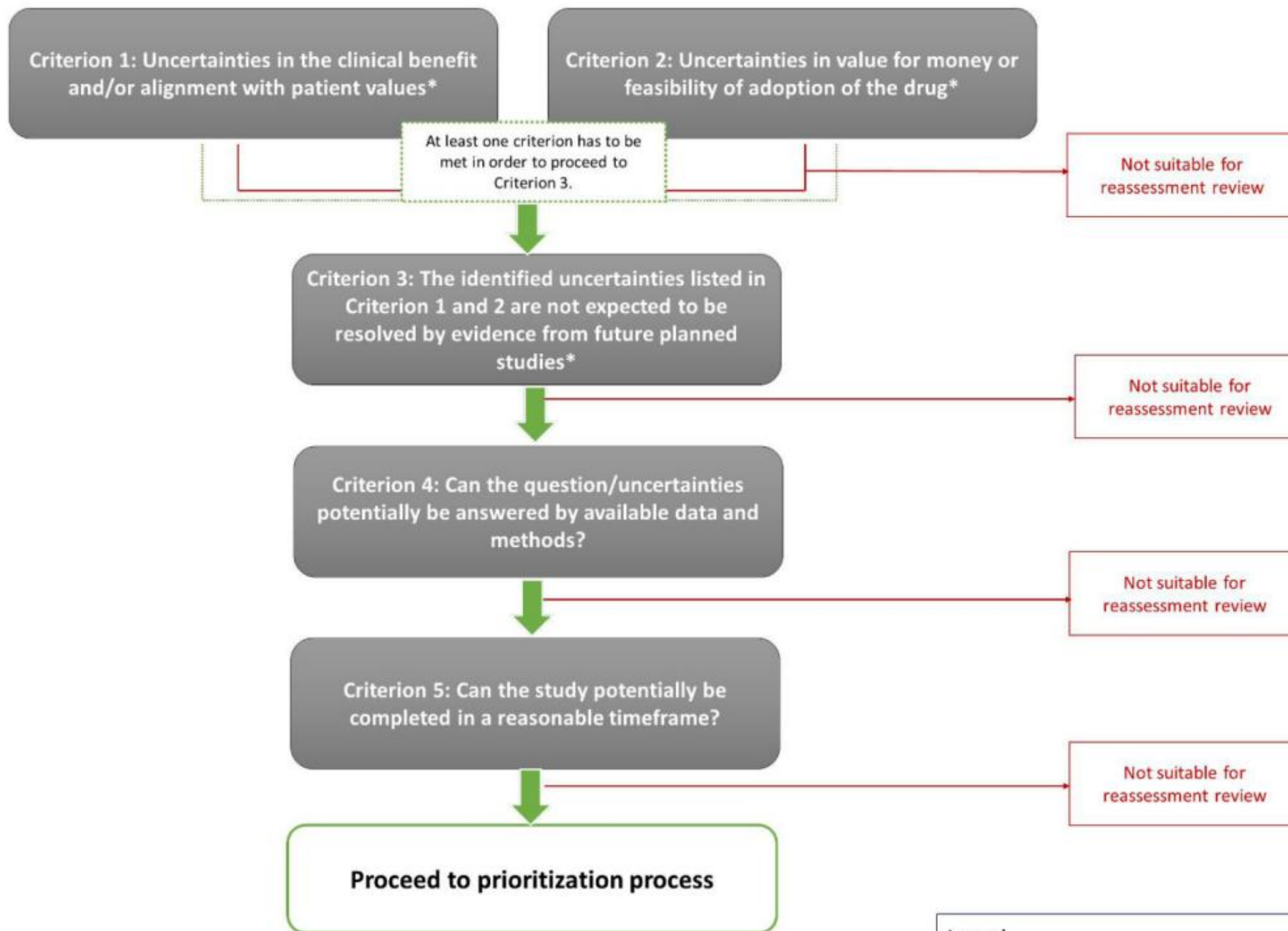
# CanREValue RWE Framework

## Pre-Funding

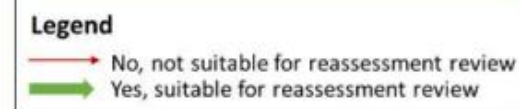
## Funding

## Re-assessment & Uptake of Evidence

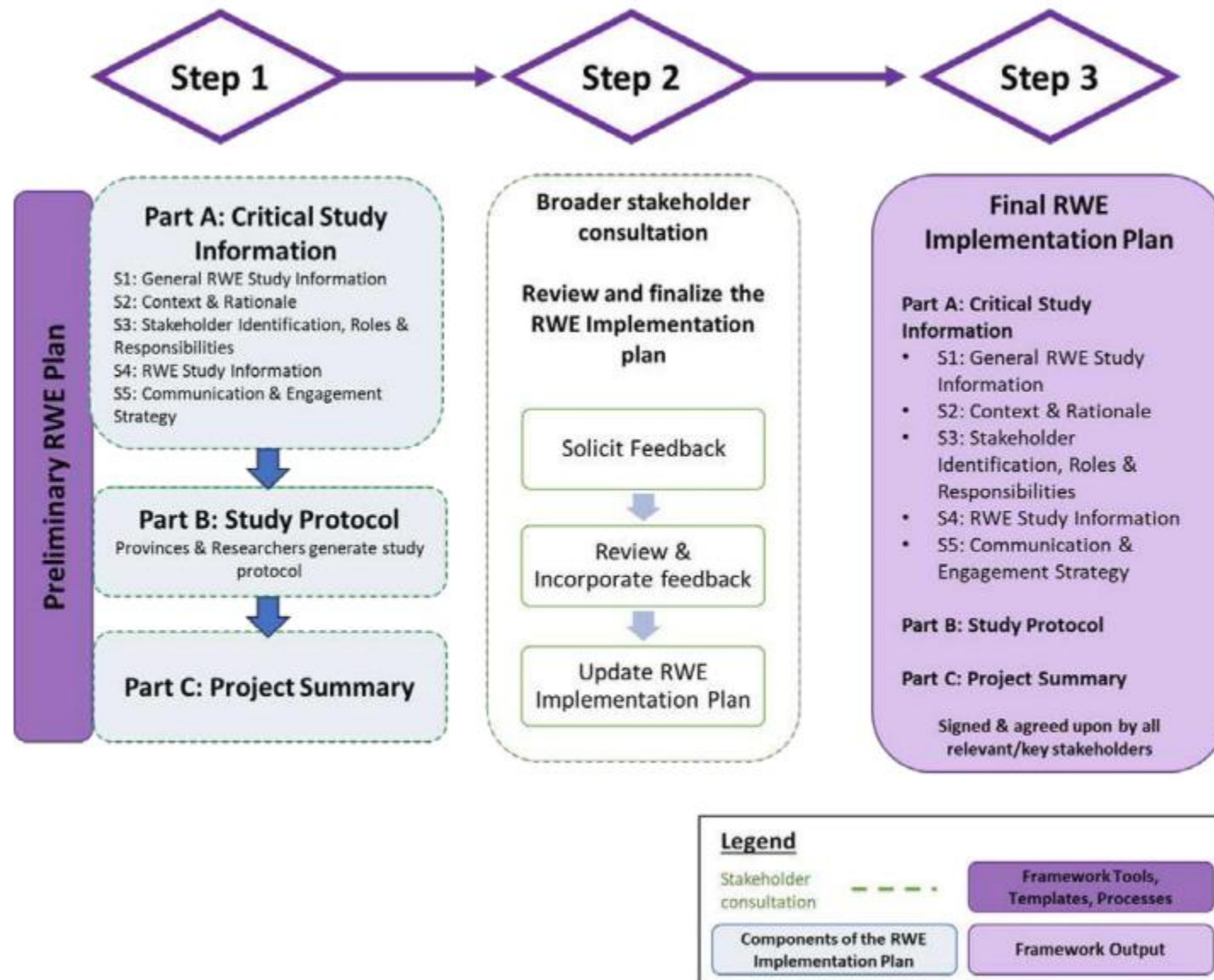




\*Guidance provided in the table below







**Figure 3** Phase II: Initiating and planning an RWE study. RWE, real-world evidence.